

# WIPRO BOUNDARYLESS DATA CENTER SERVICES

Redefining Possibilities to drive Rapid Business Outcomes





### What Customers Say?

- Globalization, Entering new markets
- Changing consumer expectations
- Legacy vs New – to what degree?
- Digitization, SMAC, and IoT demand a different IT model
- Cloud is beneficial, but how about Security and Performance



### What Customers need?

- Stand-up new environments faster and integrate with existing operations
- Scalable and agile Infrastructure to meet changing needs of Business Services
- Manage Hybrid workloads
- Resilience and Future-proof infrastructure
- Reduce Overall TCO



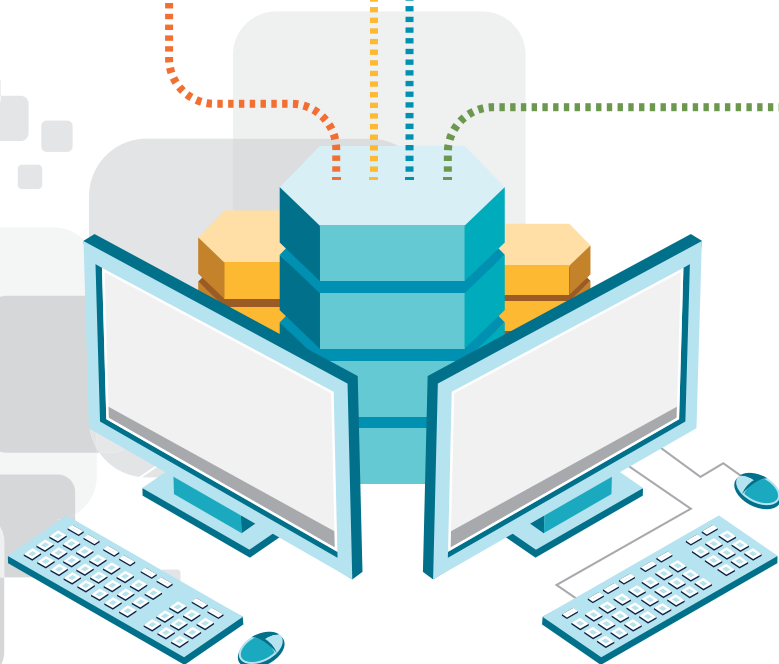
### Wipro Differentiators

- IP for execution and delivery excellence
- Leveraging own Data center capabilities – Migration, IaaS and end-to-end management
- Tested in virtual research cells
- Extending the partner ecosystem benefits to customers



### WIPRO BLDC

Software Defined, Sense and Respond, Hybrid, Hyper-Resilient, Industrialized

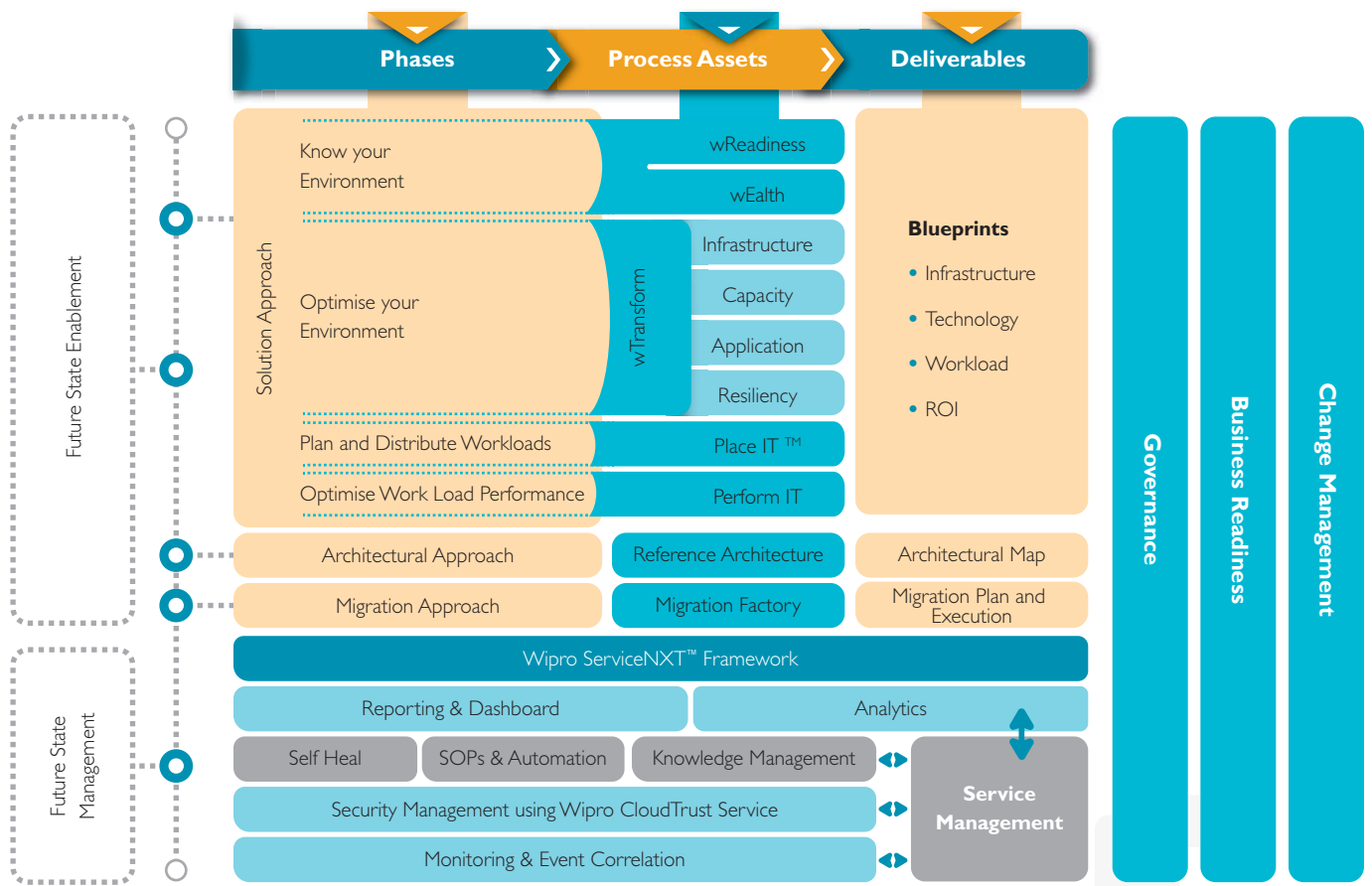


# BLDC SOLUTION FRAMEWORK

BoundaryLess Data Center is a new service paradigm which enables enterprises to expand its Data Center capabilities beyond the traditional walls of the enterprise Data Centers and its distributed sites to achieve desired business outcomes. This solution puts business services as a pivotal point, and provides a transformation path that is workload-centric, hybrid, software-defined, and hyper-resilient.

The BLDC solution comprises of a thorough assessment of Business services, Workload attributes, Infrastructure investments and associated risks to build an IT blueprint that maximizes value of existing and planned investments. This also provides guidance on optimal usage of assets in the transformation journey by minimizing Capex. This solution brings in the ability to optimally place IT workloads that are currently residing in the Data Centers or remote sites into a combination of modernized legacy, on-premise private cloud and public cloud, yet sourcing IT resources in a source agnostic manner with ease of managing and reporting centrally. This software-defined approach in the BLDC solution accelerates the lifecycle of a given business service by enhanced automation driven by policies.

The service implementation is based on reference architectures that are tried and tested in our Data Centers. These are replicable solutions executed in our industrialized migration factory, which helps our customers realize quick wins in the transformation journey and is managed in our global ServiceNXT cloud operation centers.



**wReadiness** – Discovery and dependency mapping phase

**wEalth** – Framework to capitalize existing investments & minimize asset refresh

**wTransform** – Framework for:

- a) Capacity assessment for target architecture
- b) Application portfolio rationalization
- c) Workload-based resiliency framework

**Place IT™** – Framework for workload placement on Private or Public Cloud based on workload characteristics

**Perform IT** – Application performance de-bottlenecking based on best-of-breed tools

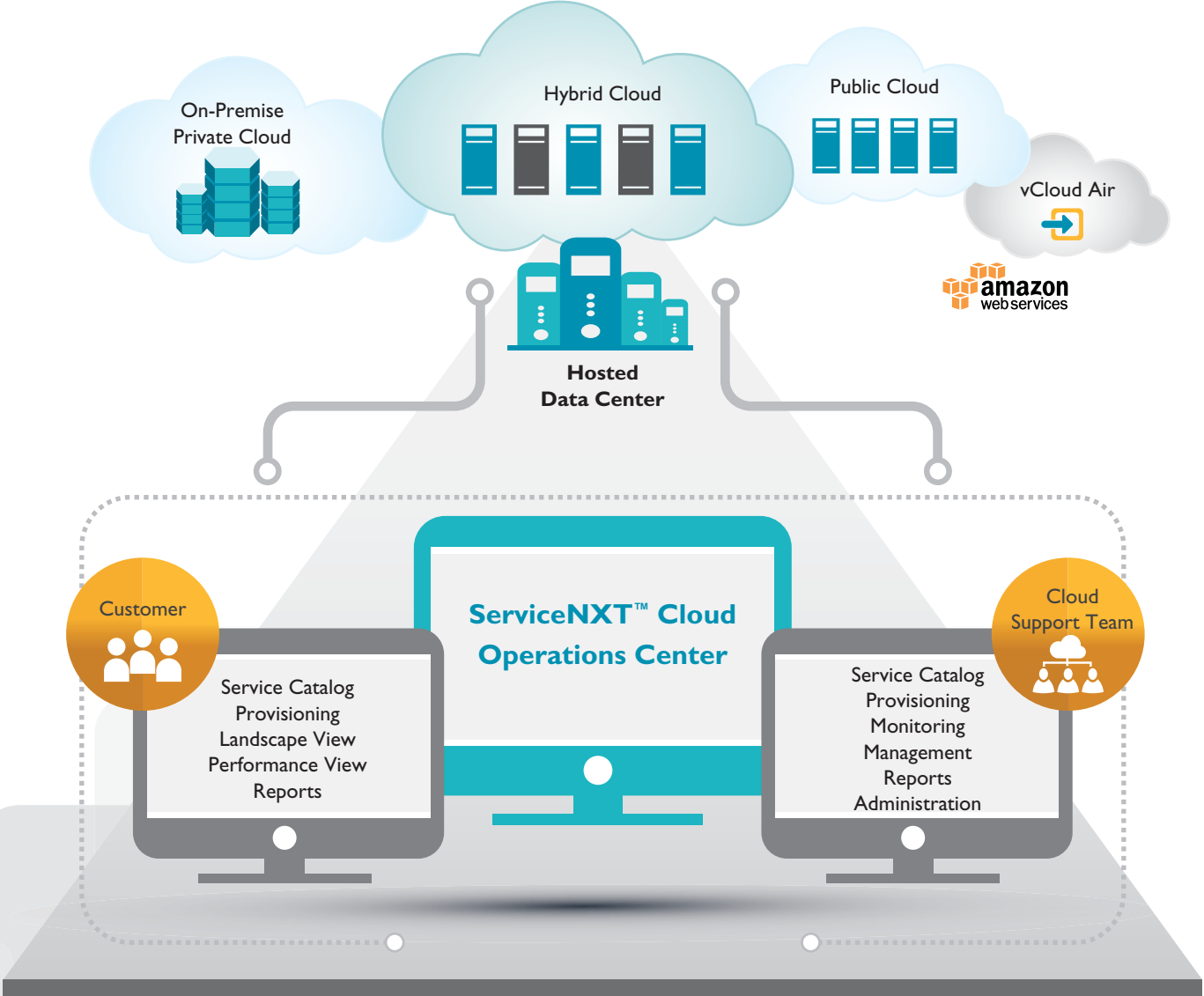
**Migration Factory** – Industrialized approach for migration to target architecture

# ServiceNXT™ NEXT

## GENERATION IT SERVICES

### FRAMEWORK FROM WIPRO

The management of the solution with Wipro ServiceNXT™ cloud operations center enables significant automation and real-time control over the environment through a single pane of glass. This includes single, unified reporting for physical, virtual, and hybrid cloud environments.

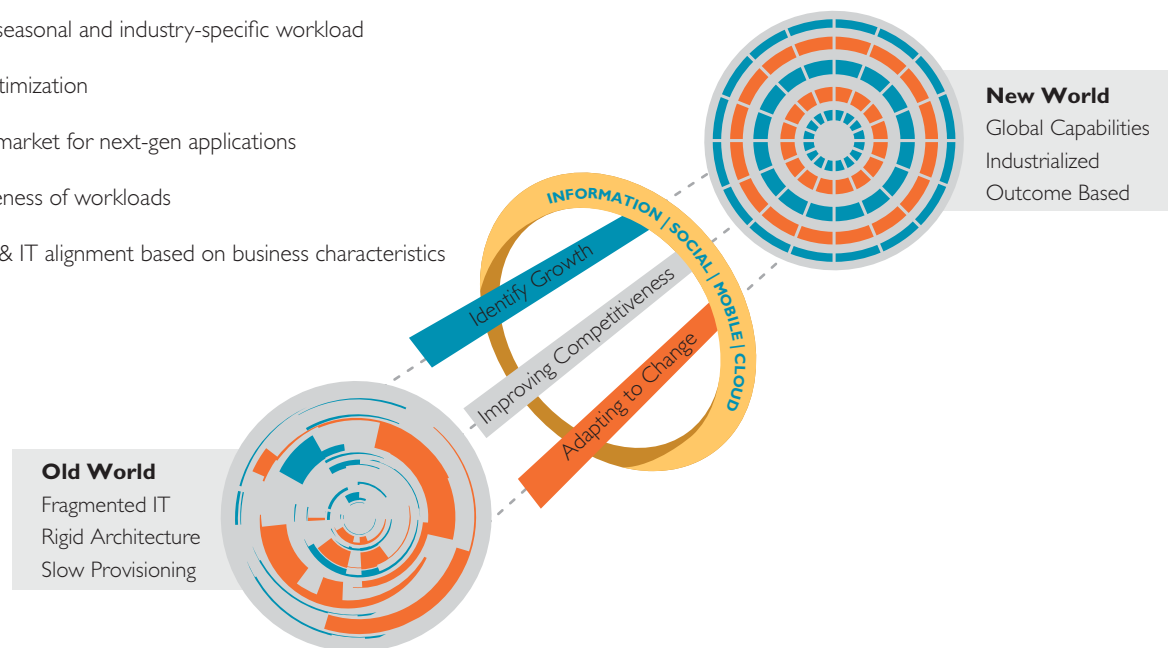


# VALUE TO BUSINESS

BoundaryLess Data Center is the next-generation Data Center offering from Wipro that will help enterprise customers embark on a journey of transformation to achieve desired business outcomes. The solution leverages benefits of software-defined Data Center, and extends much beyond the traditional Data Center and distributed sites and offers complete Data Center lifecycle management across Hybrid Data Center environments.

The BLDC solution provides business VALUE to extended enterprises with key benefits as listed below:

- **V**ariabilize daily, seasonal and industry-specific workload
- **A**chieve cost optimization
- **L**eaner time-to-market for next-gen applications
- **U**plift responsiveness of workloads
- **E**nable business & IT alignment based on business characteristics



# SUCCESS STORIES

## Leading global document and mail management company – Variabilization

- DC consolidation from 75 to 6 DCs
- Virtualization enhanced from 30 to 66% for 4,000 instances
- Variable pricing model through Wipro iStructure IaaS offering

## Large Global Insurance Provider – Hybrid Cloud Implementation and Management

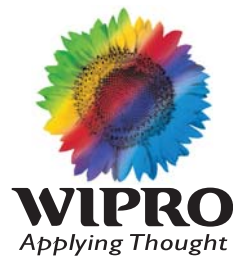
- Hybrid Cloud with AWS for Development & Testing and Private Cloud for Production Environment
- Transition from high capex to a pay-per-use model
- Single Pane of Glass through ServiceNXT Cloud Operations Center

## Leading Global Manufacturer of Specialty Glass and Ceramics – Enabling business agility and compliance

- Agility through private cloud across 3 Global DCs in North America, Europe, and APAC for 2000+ instances
- Provisioning time reduces from days to hours
- 25% TCO reduction over 5 years

## Leading Retail chain in Australia – Competitive edge through IT transformation

- TCO reduction of 27% over 5 years
- Enhanced virtualization from 45 to 65% with migration to converged infrastructure
- On track to implement hybrid cloud for the best return on investment and agility



## About Wipro Ltd.

---

Wipro Ltd. (NYSE:WIT) is a leading Information Technology, Consulting and Business Process Services company that delivers solutions, to enable its clients do business better. Wipro delivers winning business outcomes through its deep industry experience and a 360 degree view of "Business through Technology" - helping clients create successful and adaptive businesses. A company recognized globally for its comprehensive portfolio of services, a practitioner's approach to delivering innovation and an organization wide commitment to sustainability, Wipro has a workforce of 140,000 serving clients in 175+ cities across 6 continents.

For more information, please visit [www.wipro.com](http://www.wipro.com)

## DO BUSINESS BETTER

---

CONSULTING | SYSTEM INTEGRATION | BUSINESS PROCESS SERVICES

---

WIPRO LIMITED, DODDAKANNELLI, SARJAPUR ROAD, BANGALORE - 560 035, INDIA. TEL : +91 (80) 2844 0011, FAX : +91(80) 2844 0256, Email: [info@wipro.com](mailto:info@wipro.com)  
North America Canada Brazil Mexico Argentina United Kingdom Germany France Switzerland Nordic Region Poland Austria Benelux Portugal Romania Africa Middle East India China Japan Philippines Singapore Malaysia South Korea Australia New Zealand